

MaxRax[®] 8250 3U20

Rugged 3U/20" Deep Rack Mount Dual Xeon Server



MaxVision[®]'s state-of-the-art dual processor server, supporting over 32TB of removable storage in a 3U rack mount package that is only 20" deep.

Designed to deliver outstanding performance in harsh environments, including command vehicle and shipboard conditions. Making it ideal for ship, aircraft, and wheeled vehicle applications.

The MaxRax8250 3U20 features dual Xeon E5-2660 (8 core 16 threads per processor), dual mirrored 2.5" system drives in a single removable hard disk magazine along with a separate 8-drive removable magazine holding eight 3.5" data drives (up to 4TB each for a total of 32TB). Five PCIe and one PCI option slots provide for expansion.

In an alternate configuration, the eight 3.5" data drives can be replaced with three 8-drive 2.5" removable data drive magazines for a total of twenty-four 2.5" data drives plus two 2.5" system drives.

Optional MaxUPS integrated UPS provides backup power while operating on all global power sources (90 to 264VAC, 47 to 400Hz). MaxUPS also supports operating from 28VDC vehicle power while using the internal UPS battery as a 28VDC backup.

MacRax[®] 8250 3U20

Form-factor	Rugged 3U rackmount server 20" deep.
Operating System (OS)	Windows 7/ Server 2008 (others upon request).
Motherboard/Processor	Supermicro X9DRL-iF Intel C602 Chipset/ Dual Intel E5 2600 Series LGA 2011 CPU.
CPU	Dual Xeon E5-2660.
Standard/Max RAM	16 to 256GB of DDR3 1333MHz (four DDR3 DIMMS per processor socket).
Optical Drive	Slimline DVD/CD or Blue-Ray reader/writer.
System Disk/Drives	Dual 2.5" SATA HD in a single removable magazine. (up to 1TB using hybrid HDD and up to 800GB using SSD)
Data Disk/Drives	Eight 2.5" SATA enterprise HD drives in a single removable magazine. (Up to eight 4TB drives for a total of 32TB)
Input/Output	2x Gbit LAN, PS2, 4x USB 2.0 (2 front, 2 rear).
Expansion Slots	Three PCIe 3.0 x8, one PCIe 2.0 x4(x8), one PCIe 2.0 x1, one PCI.
Graphics	Onboard Matrox G200eW (optional nVidia Quadro or GeForce series graphics card; occupies first PCIe slot if used).
Management	IPMI (Intelligent Platform Management v2) with KVM support and dedicated LAN.
Power Supply	650 watt; Input = 90 to 264 VAC 50/60 Hz, or 115 VAC @ 400 Hz.
MaxUPS Uninterruptable Power Supply (optional)	Supports backup from all known global power sources yielding 75 WHr of energy. Provides support for 28 VDC with UPS backup. LiFePO4 battery technology is United Nations certified for safe airline transport.
Size (WxHxD)	17.2" x 5.24" x 20" (17.2" x 5.24" x 20.88")* *includes drive door and removable filter.
Weight	30 lbs (60 lbs in optional transit case with accessories)
Accessories	Microsoft 600 USB/PS2 keyboard, Microsoft laser mouse, Pelican 1610 transport case optional.
Transport Rack Option	Roller rack case supporting up to 6U.
Operating/Non-Operating Temperature	Operating 0 to +50°C (60°C max with SSD) / Non Operating -40 to +70°C. (Heater/fan control option for operation between -32 and +50°C.).
Altitude	Operation up to 10,000 ft (25,000 ft with SSD).
Enclosure/Sealing	Dust Filtration.
EMI/EMC	FCC Class A, RoHS-compliant. (MIL STD 461E by special contract).

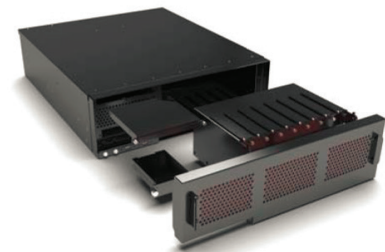
Designed to fit into racks on 20" deep with room for rear cables.



Full-featured input/output (I/O) allows for maximum connectivity.



Desert-proven filtration system and removable drive magazines.



Optional SKB 6U 20" roller rack.



While Rugged Portable Computers LLC uses reasonable effort to assure that this information is accurate and up-to-date, the information may contain factual or typographical errors. Rugged Portable Computers LLC makes no warranties or representation as to the accuracy of such information. The information and products may be changed at any time with our prior notification or obligation. Rugged Portable Computers LLC © Copyright 2013