

MaxPac[®] 8040A

A-Class



An entry level rugged workstation for users requiring performance and capabilities that stretch beyond the limitations of rugged notebooks or laptop computers.

The MaxPac[®] A-Class models have “desert proven” air filtration system and sufficient airflow for operation in 0 to 50°C. Additionally, users can choose between high resolution 1280 x 1024 17” LCD with or without a Resistive Touch Screen capability. When packed in the Pelican[®] 1610 transit case, It meets MIL-STD 810G requirements for -40°C to 70°C, rain, dust, sand, salt fog, drops up to 30” and vibration for two wheel trailers. Supports two PCIe option slots for graphics or data collection, and up to 4 removable 2.5” HD or SSD.

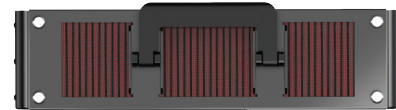
MaxPac[®] 8040A

Processor	Intel Core i7-4770T 2.5GHz/3.7GHz Turbo, 8 thread 4 Core with 8MB cache.
Motherboard	MSI Z87M-G43 features Haswell technology (4Gen Intel Core) using LGA 1150 processors, 32GB memory max.
Memory	Up to 32GB DDR3 1333 non-ECC (16GB tested).
LCD Display Size	17" 1280 x 1024 (Optional Resistive Touch).
LCD Monitor Specifications	160°H/160°V viewing angle, 300 nits, 16.7M colors, 8ms response time.
Video Interface	DVI-A for Integrated LCD.
Video Controller Options	Integrated Intel HD4000 graphics. Options: nVidia Quadra K2000 or GTX650ti
Std I/O Interface	Integrated GbE, two USB3, four USB2, HDMI, Display Port, VGA, DVI-D, Audio/Speaker.
PCI Expansion Slots	One PCIe3.0 x16, One PCIe2.0 x16
PCI Slot Lengths	9 - 13" depending on disk configuration.
Removable Hard Drive	Up to two dual 2.5" drive removable magazines, 4 drives maximum.
Optical Drive Options	DVD/CD Writer or Blu-ray Burner.
Video Projection Ports	DVI-I and Display Port.
Power Supply	274 Watts 90-264VAC 50-60Hz.
Software OS	Windows 7 Pro standard, Windows 2008 Server, Linux available upon request.
Size Closed	16"W x 16.3"H x 5.4"D.
Size Open	16"W x 16.3"H x 8"D.
Environmental	0-50°C operating temperature; 10-90% relative humidity.
Transit Case (optional)	Pelican 1610 with custom polyethylene foam.
Weight	26 pounds.
Total Weight: Computer w/ Transit Case	46 pounds.

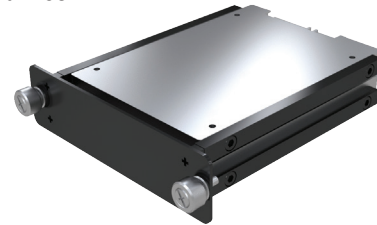
Patented Box-in-box design protects internal system from shock and vibration.



"Desert Proven" Air Filtration System eliminates nearly all small particle dust and filters all components.



Tool-less removable 2.5" SATA disk drives.



Feature rich I/O and expansion car slot for maximum connectivity and utility.



Pelican 1610
Transit Case

While Rugged Portable Computers LLC uses reasonable effort to assure that this information is accurate and up-to-date, the information may contain factual or typographical errors. Rugged Portable Computers LLC makes no warranties or representation as to the accuracy of such information. The information and products may be changed at any time with our prior notification or obligation. Rugged Portable Computers LLC © Copyright 2013