

MaxPac[®] 8000SL

Triple 21.5" Display, Single Xeon and 16TB of removable storage



The ultimate for imagery, exploitation, and analysis workstation

The MaxPac[®] 8000SL is a rugged portable workstation featuring a single Xeon E5-1600 processor, seven PCIe slots, up to 16TB of removable data storage, and your choice of one, two, or three 21.5" 1920 x 1080 LED backlit LCD displays. The MaxPac 8000SL is designed for easy access and service. It operates between 0 to 50C in dusty environments and when stored in the provided transit case meets MIL STD 810G for drop, vibration, temperature, humidity, salt fog, rain, sand, dust, and altitude specifications. There are two removable disk drive configurations optimized for either four 3.5" data HDD magazine, or a flexible 2.5" data magazine which supports eight (9.5mm) SATA 6.0 SSD or Hybrid disk or four (15mm) SAS drives (FIPS 140-2 optional). Both system have two additional 2.5" system disks contained in a single removable magazine which can be either HDD, SSD or Hybrid HDD technology. Optional MegaRAID 9270-8i for hardware RAID.

MaxPac[®] 8000SL

Processor/Motherboard	Intel Xeon E5-1650 processor clocked up to 3.8GHz, SuperMicro X9SRL (E5-1660 optional).
Memory	Up to 64GB DDR3 ECC unbuffered or 256GB Registered Memory.
LCD Display Size	Single, dual or triple 21.5" 1920 x 1080 LCD (LED backlight).
LCD Monitor Specifications	Brightness: 250mcd/m ² , Viewing Angle: 170 L-R/160 U-D; Contrast Ratio: (1000:1) Response Time: 5ms; 16.7 million colors.
Video Projection Ports	Optional HDMI out port on each of the HD displays. (Can only be used with video cards supporting DVI or HDMI outputs).
Video Controller Options	nVidia K2000, K4000, K5000, GTX650ti, GTX760, GTX770 (others by request).
Std I/O Interface	Dual Gigabit Ethernet Ports (Intel 82574), 2x USB 2.0 external, 4x USB 2.0 internal headers, PS/2 keyboard/mouse ports, COM port external, basic Matrox VGA (not typically used), internal TPM (optional).
Expansion Slots	Two PCI-E 3.0 x8 (in x16), Two PCI-E 3.0 x8 slots, Two PCI-E 3.0 x4 (in x8), one PCI-E 2.0 x 4 (in x 8). All slots full length full height.
Removable Hard Drive Magazines	HDPac4™ magazine allows removal of all four 3.5" data drives without tools in less than 10 seconds. Dual 2.5" system drive magazine supports single or mirrored drives. Optional eight data drive 2.5" magazine for SSD arrays.
Choice of removable Data Hard Drive Magazines; Capacity and Performance	<ul style="list-style-type: none"> Four 3.5" HDDs 7200rpm supporting 1, 2, 3 or 4TB data drives for a total up to 16TB of data. Eight 2.5" data drive SATA configuration supports eight 9.5mm SATA drives with capacity of 8 x 1TB Hybrid SSHD or 8 x 800GB SSD. (SSD sizes from 80GB to 800GB using Intel S3500/3700). In the four data drive SAS configuration, four 14mm 2.5" SAS drive (FIPS 140-2 optional) @ up to 900GB each.
Hard Drive Interface	SATA/SAS supporting software RAID 0, 1, 5, 10 or hardware RAID 0, 1, 5, 6, 10 (optional). Optional MegaRAID 9270-8i for hardware RAID.
Optical Drive Options	SATA slim line slot loading DVD/CD writer or SATA slim line slot load Blu-ray writer.
Power Supply	600 Watts 90-264VAC 50/60Hz and 400Hz.
Keyboard/Mouse	Microsoft 600 keyboard (USB), Logitech m110 mouse (USB or PS2).
Software OS	Windows 7 Pro or Ultimate, Windows 2012 Server, Red Hat & SUSE Linux.
Size Closed	Single display 20"W x 15.8"H x 7.2"D; Dual display 20"W x 15.8"H x 8.3"D; Triple display 20"W x 15.8"H x 9.4"D.
Size Setup (displays unfolded)	Single display 20"W x 15.8"H x 7.2"D; Dual display 40"W x 15.8"H x 7.83"D; Triple display 59.1"W x 15.8"H x 9.4"D.
Environmental	Environmental: 0°C to 50°C/10% to 90% relative humidity (non-condensing) operating in dirty air conditions, FCC Class A. When stored in the provided transit case, the product can withstand MIL STD 810G -40°C to 70°C storage temperature, blowing rain, salt fog, sand, dust, vibration for two wheel trailer and drops from 30".
Regulation	FCC Class A, CE.
Transit Case	Custom watertight Roller Case (also stores keyboard, mouse and cables).
Computer Weight	Single display approximately 41lbs; Dual display approximately 48lbs; Triple display approximately 55 lbs.

Rich standard I/O and up to seven PCIe slots provide the flexibility to configure the 8000SL data capture cards.

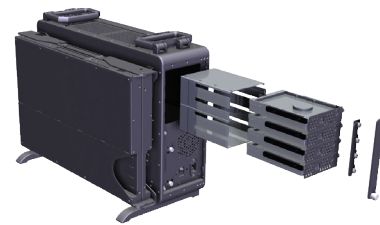


Shown with 2 closed displays

Operates between 0 to 50°C and 10 to 90% relative humidity (non-condensing) in dirty air environments.



Removable mass storage supports four removable 3.5" data disks (typically 12TB data storage)



While Rugged Portable Computers LLC uses reasonable effort to assure that this information is accurate and up-to-date, the information may contain factual or typographical errors. Rugged Portable Computers LLC makes no warranties or representation as to the accuracy of such information. The information and products may be changed at any time with our prior notification or obligation. Rugged Portable Computers LLC © Copyright 2013